

Application and Data Server

METASYS®



- Uses existing IT infrastructure
- Standard Web-browser based user interface
- Secure user access
- Customizable system navigation and information access
- Routes alarm and event messages for rapid response
- Site director function coordinates information display from multiple network devices
- Optional data storage on separate server enhances security and improves operation speed

The Metasys® Application and Data Server (ADS)

manages the long-term storage of trend data, event messages, operator transactions and system configuration data. It provides secure communication to the network of Metasys NIE and NAE supervisory controllers. The user interface is extremely flexible and efficient. You can easily manage occupant comfort and energy usage, quickly respond to critical events and optimize control strategies via your Web browser. Authorized users can also access information from the Metasys system using conventional Internet protocols and IT standards. Also, the Extended Application and Data Server (ADX) can be configured on a multiple PC platform separating the application component from the database, to comply with IT networking security policies.

Application and Data Server

Secure, Web-browser access

Access the ADS via a desktop, laptop or any other type of PC platform running standard Web browser software. Multiple users can simultaneously communicate with the ADS on an Intranet, Internet, dedicated building management system network or telephone line. Plus, the software supports industry-standard firewall solutions for securing network communication against unauthorized access.

Web-based user interface

The Web-based Metasys user interface provides a powerful framework for navigating the BMS, displaying data, sending commands and for notifying the operator of critical information. The user can customize the display and select the navigation tree displayed when logging on to the user interface. It supports multiple international languages simultaneously. The pop-up window displays the highest priority alarm message. An event viewer displays system-wide overview of events in chronological order.

Dynamic display with high-resolution color graphics

The display with high-resolution color graphics allows the user to easily move through buildings, floors and areas, viewing building systems and control processes. Users can quickly analyze and make any necessary system adjustments. A multiple panel layout displays different aspects of the network at one time.

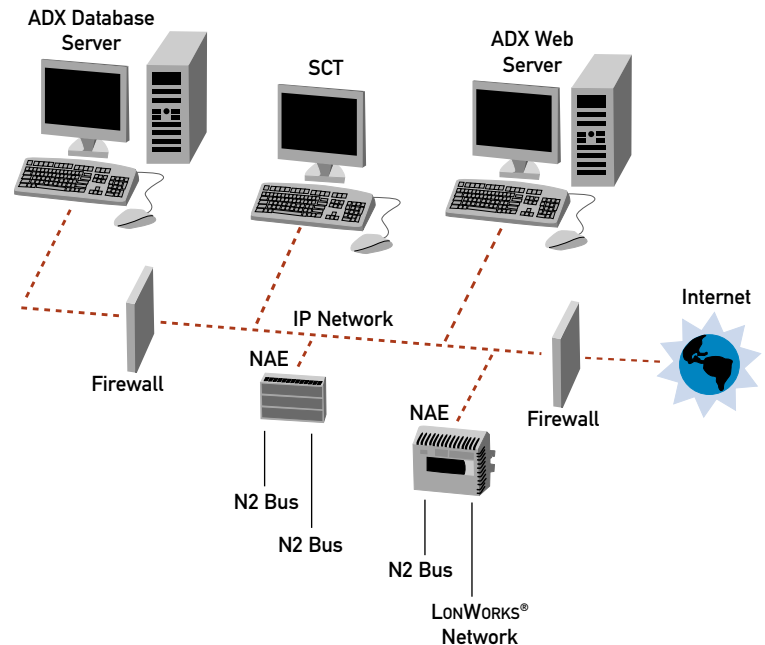
Integrated System Configuration Tool

The System Configuration Tool (SCT) enables the user to perform the system engineering in an offline mode for ease of operation. It also provides control program simulation and database capabilities.

Metasys® is a registered trademark of Johnson Controls, Inc.
LONWORKS® is a registered trademark of Echelon Corp.
Microsoft® and Windows® are registered trademarks of Microsoft® Corporation.

Extended Application and Data Server (ADX)

The ADX software option serves a larger number of concurrent users. It runs on Microsoft® Windows® 2000 Server, Advanced Server or Windows 2003 operating systems. The ADX also supports the Microsoft SQL Server 2000 database. It can be installed in a split configuration with the ADX software/user interface on the Web server and the historical trend data on the SQL server. The database server can be located behind a firewall to minimize exposure to unauthorized users. The user interface operates faster because all historical data is on another server. The ADX provides more extensive historical and configuration data storage, while lowering installation and monitoring costs.



ADX Separate Database Configuration